

Der alte Holzknecht

Komp.: Luis Plattner
Bearb.: Merler Manuel

Einleitung

The introduction consists of four staves of music. The first staff begins with a treble clef, a key signature of one flat (B-flat), and a 3/4 time signature. The melody is written in a simple, folk-like style. The accompaniment is provided by a guitar, with chords indicated by letters (B, A) and accidentals (b). The second and third staves continue the melody and accompaniment, with the guitar part featuring a mix of chords and single notes. The fourth staff concludes the introduction with a final chord and a double bar line.

B b b A b b B b b
A b b A b b B b b A b b
B b b A b b B b b A b b
B b b B b b B G H $\frac{b}{B}$ $\frac{b}{B}$

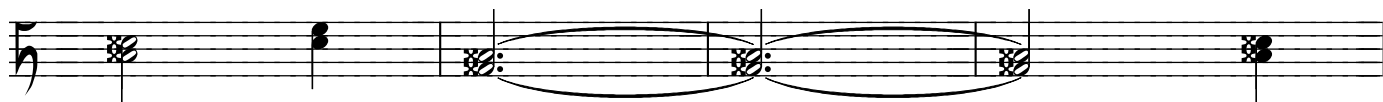
Strophe

The first stanza consists of four staves of music. The first staff begins with a treble clef, a key signature of one flat (B-flat), and a 3/4 time signature. The melody is written in a simple, folk-like style. The accompaniment is provided by a guitar, with chords indicated by letters (B, A) and accidentals (b). The second and third staves continue the melody and accompaniment, with the guitar part featuring a mix of chords and single notes. The fourth staff concludes the stanza with a final chord and a double bar line.

B b b A b b B b b
A b b A b b B b b A b b
B b b A b b B b b A b b
B b b B b b A b b B b b

Der alte Holzknecht

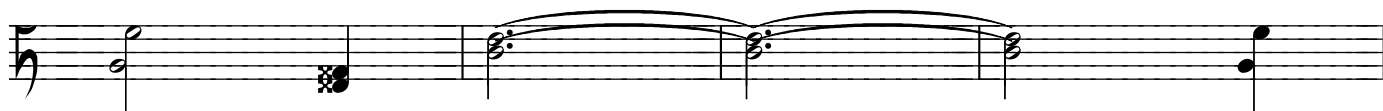
-2-



A b b C c c B c c C c c



B c c C c c B c c C c c



B c c A b b B b b A b b



B b b B b b B G H B b b

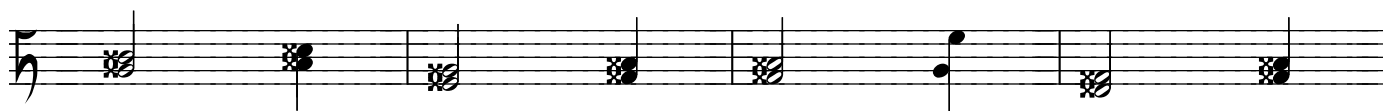
Refrain



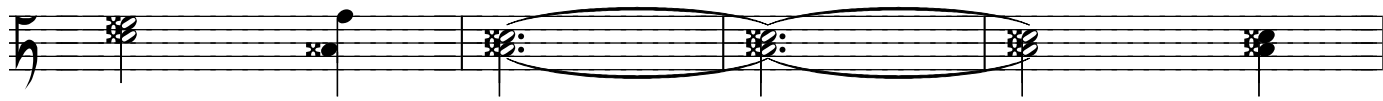
D d d C d d D d d



C d d D d d C d d D d d



C d d B c c C c c B c c



C c c C c c B c c C c c

Der alte Holzknecht

-3-

B c c D d d C d d D d d

C d d D d d C d d D d d

C d d B c c C c c B c c

C c c C c c D F A C C

Schluss

C c c G c c E c c B c c

B c c C c c B c c C c c

C c c D F A C B F C